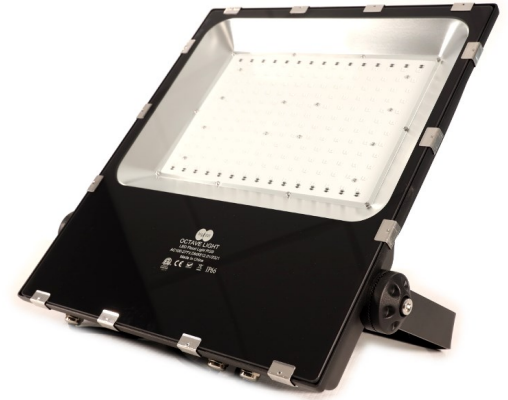




The Octave light offers an all in one solution with over 16 million different colors to choose from and creates a cool-white light for facility cleaning.



Questions? Please reach out to kyle@bigdotinc.com or call us at (615) 850-1870



Construction & Installation

Octaves are constructed with aluminum shell casing, tempered glass, and a chemical sealant to protect the fixture from your wash's corrosive environment. Each fixture is connected to one another through standard DMX LV wiring via RJ 45 plugs making it an easy plug and play installation.

Electrical & Operations

The Octave fixture is universal voltage (120-277V) with a highly reliable RGB driver. It can operate in temperatures -20 degrees Celsius to 40 de-grees Celsius with high-efficacy LED chips to maintain overall cool fixture temperatures.

DMX-Full Scale RGB Practical Applications

Octave doubles as on-demand general facility lighting for repairs, maintenance and emergencies with just the push of a button. Intelligent lighting allows for extremely fluid color fade effects with over the top holiday and special event shows!

Octave RGB LED Light Fixture	DMX-512 Controllable
Chip Type	SMD5050 RGB LED 270
Power	Watts
Beam Angle	120 Degrees
Input Voltage	AC100-277V
Lamp Size	22" x 18.5" x 2.75"
Weight	20 LBS
Carton Size & Weight	24" x 5" x 19.5" - 23 LBS
Finish Color	Black
Waterproof Grade	IP65/IP66
Power Factor	>0.95
Life Span	50,000 Hours
Fixture Material	Aluminum + Glass
Manufacturer's Warranty	5 Years

